

水晶贴机器保养手册

UV DTF Maintenance Manual

备注：UV 机器使用 UV 墨水，需要使用特定的 UV 清洗液。

.Note:The UV printer work with UV ink, and also requires the specific UV cleaning liquid .

UV 清洗液
UV cleaning solution



无尘布
dust-free cloth



一、刮片、墨垫、墨垫平台、压纸片、小车底板每天下班前使用无尘布加 uv 清洗液清理干净；
1.We suggest that use the cleaning liquid with dust-free cloth cleaning the wiper ,ink pad ,ink capping station ,press clip,and the trolley base plate before you finish the production every day;

刮片
Wiper



清理前

清理后

before cleaning

after cleaning

墨垫（红圈）和墨垫平台（黑圈）
Ink capping (red circle) and ink capping station (black circle)



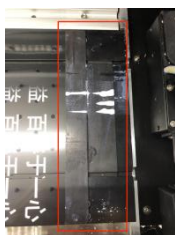
清理前

清理后

before cleaning

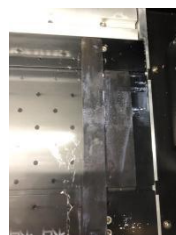
after cleaning

压纸片
Press clip



清理前

before cleaning



清理后

after cleaning

小车底板
Carriage bottom



清理前

before cleaning



清理后

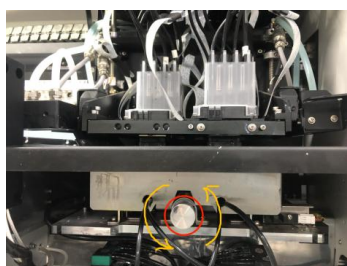
after cleaning

PS: 清理小车底板和打印头表面需要先把机器关机，然后按照 P1 图中黄色箭头的方向旋转红色圈圈中的旋钮，降低平台的高度，然后手动把小车推到 P2 图中的位置。

PS: It needs to turn off the machine before cleaning the trolley base plate and the surface of the print heads, then turn the knob in the red circle according to the direction of the yellow arrow in the P1 picture to lower the height of the platform, and then manually push the trolley to the position in the P2 picture.

P1

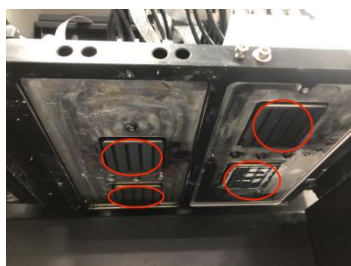
P2



二、打印头表面 3 天清理一次，用无尘布沾上 UV 清洗液从上往下擦；

2. Clean the surface of the print head every 3 days, and wipe it from top to bottom with a dust-free cloth dipped in UV cleaning solution;

打印头表面
Print head surface



清理前

before cleaning

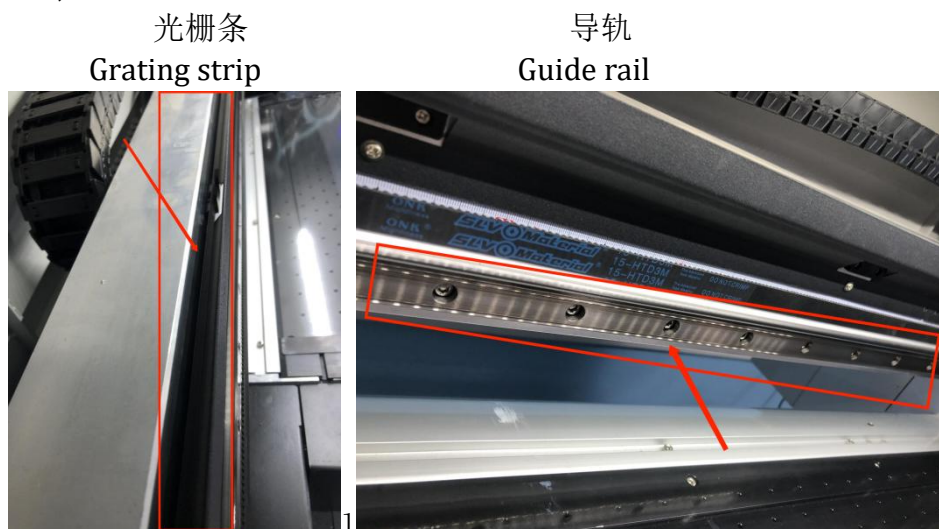


清理后

after cleaning

三、光栅条三个星期用无尘布清理一次，导轨一个月加一次缝纫机油；

3. Please clean the grating strips with a dust-free cloth every three weeks, and add sewing machine oil to the guide rails once a month;



四、打印中要加彩条，防止打印中某个颜色长时间不喷墨，造成打印头堵塞；

4. Color bars should be added during printing to prevent one of color from not jetting ink for a long time during printing, which will cause the printhead to be clogged;



五、打印前先打印测试条，确认没断墨再打印（出现断墨就要清洗好再打印）；

5. Please print the test strip before printing, and then print after confirming that the ink is not broken (if the ink is broken, it must be cleaned before printing);



正常的测试条

Normal Test Strip (all ink come out 100% and all color show in singel line)

六、打印过程出现断墨（图案有线条），需要暂停并且清洗；

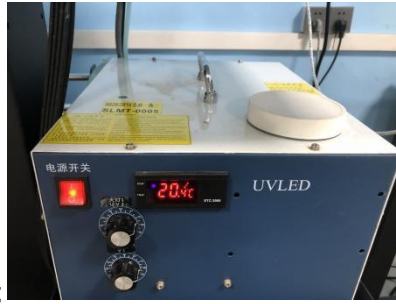
6. During printing, if there is ink cut off (The pattern with lines), then you should stop printing and do cleaning for print heads;

七、每天关机前需要打印测试条（正常测试条看保养第五条），断墨要清洗好再关机；

7. Please print test strip after you finish your production everyday (see No.5 maintenance books # for the normal test strip), and the machine should be cleaning before shut down;

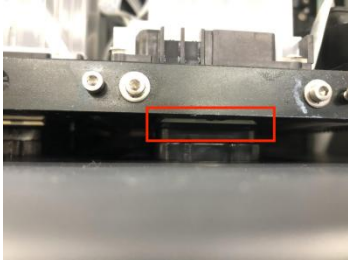
八、水箱每 3-5 天需要添加更换纯净水或者蒸馏水；

8. The water tank needs to be replaced with purified water or distilled water every 3-5 days;



九、打印机超过三天不使用需要把打印头复位好，墨管夹好防止虹吸漏墨；

9.The printer is not used for more than three days, and the print head needs to be reset well, and the ink tube clamp is good to prevent siphon leakage of ink;



十、打印环境保持温度 18-35 摄氏度，湿度 38-65%。

10. The room environment request 18-35 degrees centigrade and 38 - 65% humidity.



注意事项:

Notes:

一、打印过程不能触碰打印膜，以免打印膜刮伤打印头；

1. Do not touch the printing film during printing to avoid the printing film scratching the nozzle;

二、加墨水前要用力摇晃墨水瓶子防止沉淀；

2. Before filling ink, shake the ink bottle vigorously to prevent sedimentation;

三、打印膜保持干燥不能受潮，打印膜超过 3 天不使用需要使用保鲜膜包好；

3.The printing film is kept dry and cannot be damp, and the printing film needs to be wrapped with plastic wrap if it is not used for more than 3 days;

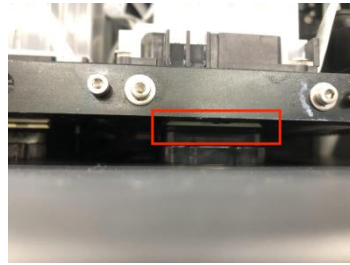
四、打印中突然停电，需要手动把小车推回原位喷头复位保湿好。

4.Power cut during printing,the carriage need to be push to origin and keep the print head wet.



小车复位原点

carriage reset origin



打印头表面和墨垫密封保湿

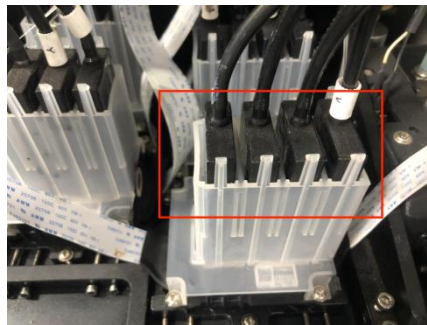
carriage resets the origin print head surface and ink cap to seal and moisturize

打印机需要定期更换和清洗的配件：

Accessories that need to be replaced and cleaned regularly:

1. 墨囊每半年更换一次；

1.The ink capsule is replaced every six months;



2. 刮片（图片在保养第一条）、墨垫（图片在保养第一条）、墨泵每一年更换一次；

2.The press clip (the picture is in the first item of maintenance), ink cap (the picture is in the first item of maintenance) and ink pump should be replaced every six months to one year;

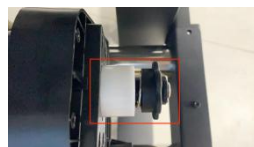


墨泵

Ink pump

3. 光栅条（图片在保养第三条），阻尼器，小车长皮带，减速皮带每一到两年更换一次（出现磨损需要更换）；

3.Grating strips (picture in maintenance article 3), dampers, trolley belts, speed reduction belts are replaced every one to two years (need to be replaced in case of wear);



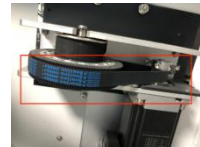
阻尼器

damper



小车长皮带

Trolley long belt



减速皮带

Speed reduction belt

4. 其它配件出现损坏时更换。

4. Replace other accessories when they are damaged.