



Easy to Use PrintFactory

The complete **RIP-based workflow** with tools that **prepare work faster and more accurately** than any other system on the market



Our Key Statements



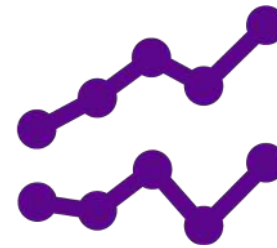
BETTER PRINTING

Consistent
color



BETTER PROFITS

Lower ink
costs



BETTER PRE-PRESS

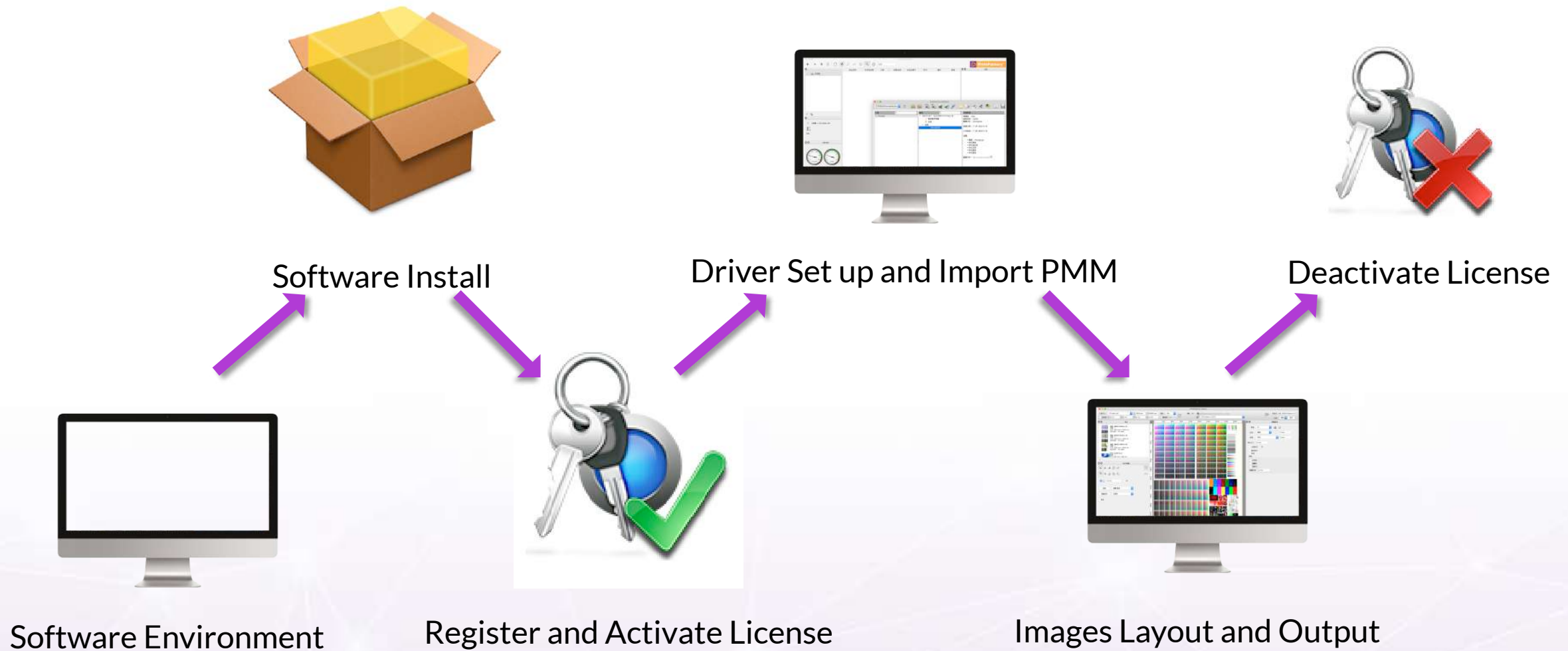
Smarter job
prep



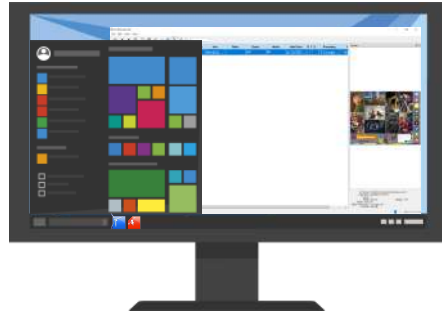
BETTER PRINTING

Less wasted
media

Outline



Hardware Configuration



Windows® 7 – 10, Server 2008 R2 (64 bit),
Windows Server 2016 with Desktop Experience
Processor: Intel® Core™ i7 Processor
Memory: 8+ GB
Hard Disk: 160+ GB SSD



MacOS® 10.12 – 10.14
Processor: 2.0 GHz Intel® Core™ 2 Duo
Memory: 8+ GB
Hard Disk: 160+ GB SSD

Windows Systems Recommended: Professional, Ultimate

- Microsoft Official Website or Official Shop
- Brand Computer Pre-installed System

Warning: Please DON'T install and use GHOST system

Installation Wizard

- Close System Firewall, temporarily quit antivirus software, connect to Internet, double click installation package, start to install PrintFactory
- In Windows system, please allow to install two drivers for measurement devices
- Finish install, computer desktop will show 5 icons, the most used modules are RIP and Layout



Register and Activate License



Register License

- Computer online, fill in 12 activation code on the left side of of the activate wizard

Note:

1. Activation code is not case sensitive;
2. Please don't fill any info on the right side of the activate wizard;
3. Please keep the license voucher file in a safety place, especially record the license SN.

- Click Next, go to register interface, please fill in REAL and TRUST user information

Note:

1. Email address, company name, user's name, are Key word to search in background;
2. Register license using Email address and password are account and password to login app.printfactory.cloud

- Finish registration, click next, activate wizard will show: The license was successfully activated!

Note: License registration only needs to be done once.

Activate Wizard

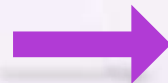
The license will be activated and linked to the hardware of this computer.

Enter your Activation Code* here:
A12-B23-C45-D67

*The Activation Code can be found on the license voucher supplied with this product.

If you do not have an Activation Code please login:
Email
Password

< Back Next >



Product Registration

Activation code

First Name Last Name

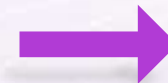
Email Address

City Country
Select Country

ZIP Company

Password Re-type Password

Register



Activate Wizard

The license was successfully activated!

< Back Finish

Soft-Encryption Strengths

- No hardware encryption loss, damage or occupy computer USB port etc.
- Real-name authentication, easy to get back once lost by identify customer information
- Recording computer system ID and hardware information to ensure the authenticity and validity of software and avoid economic and legal disputes

Real-Name Authentication Strengths

- Use identify registration information to get back license once lost, reduce economic losses
- Dealers and users could login app.printfactory.cloud website, to check software usage and feedback to software development
- Software support could full support and tell users how to use PrintFactory after check license SN

Driver Set up and Import PMM



Set up Printer Driver

- Double click desktop RIP icon, go into RIP interface, choose connect way and link, click OK, PrintFactory will set up printer driver

- TCP/IP, Internet Cable connect

China brand printer connect code:127.0.0.1

Global brand printer connect code: check printer mainboard

- Folder

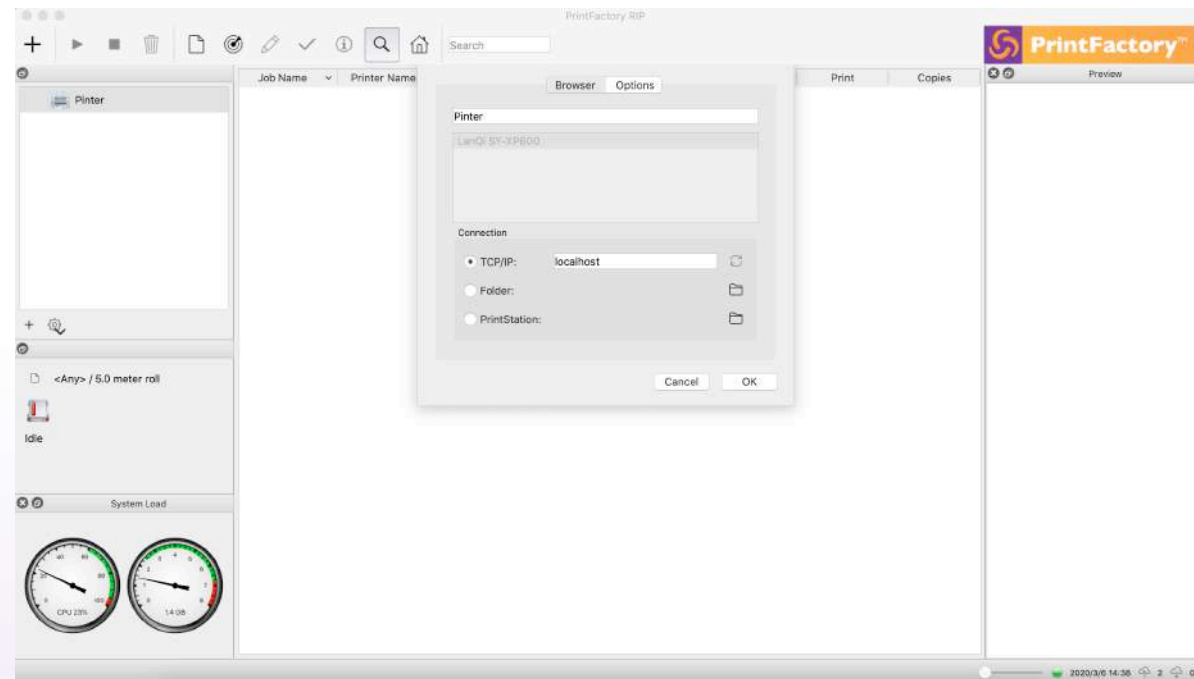
Recommend link to RIP file in enough space disk

Forbid share work folder and output folder with same path

Recommend name output folder name as PF_RIP

- PrintStation

Link to PrintStation module, output Intermediate file, for PrintStation to layout after RIP

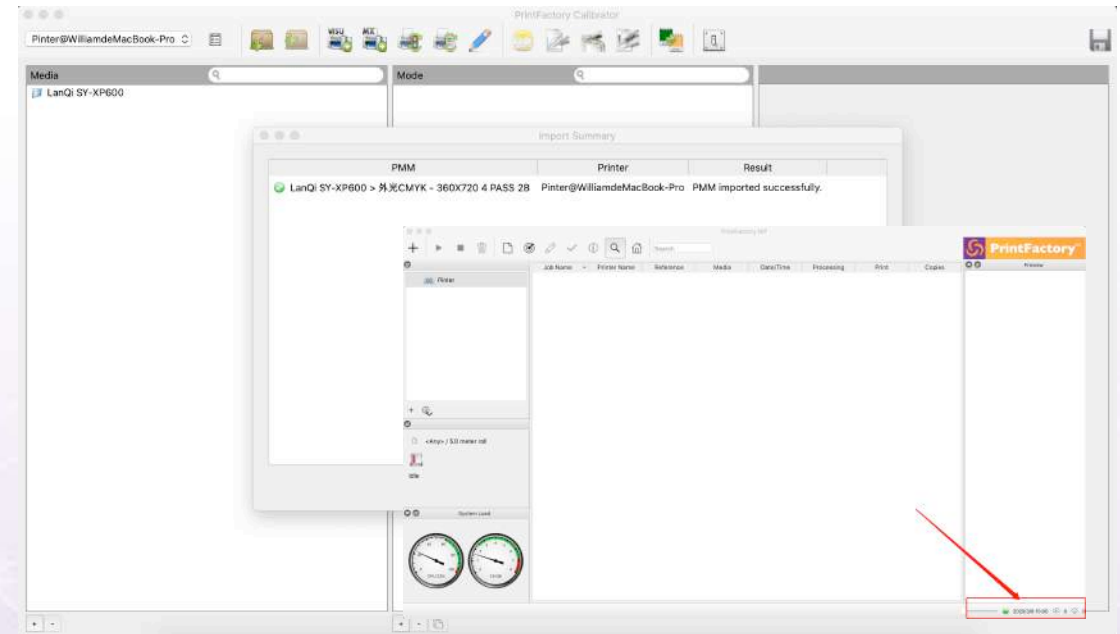


Driver Set up and Import PMM



Import PMM and sync to cloud

- Click the sixth icon in the second upper column of the RIP interface (go to Calibrator), go into Calibrator interface.
- Click the third icon in the upper column of Calibrator interface(Import), follow wizard to import PMM, Import Summary will show the result for each PMM profile.
- PrintFactory will upload the imported PMM to Cloud in real time for backup.
- The status will be displayed in right corner of RIP interface, until upload and download status is 0.



Layout Preference Settings

- Open Layout, Edit-Preferences, in General and Color columns, Setting parameters.

- In General column, please set:

Fixed License Server, Fixed RIP IP list:127.0.0.1

Submit behaviour: Close

Reference Profile: ISO Coated v2 (ECI)


- In Color column, please set:

RGB's, CMYK's, Gray's Image and Vector: None

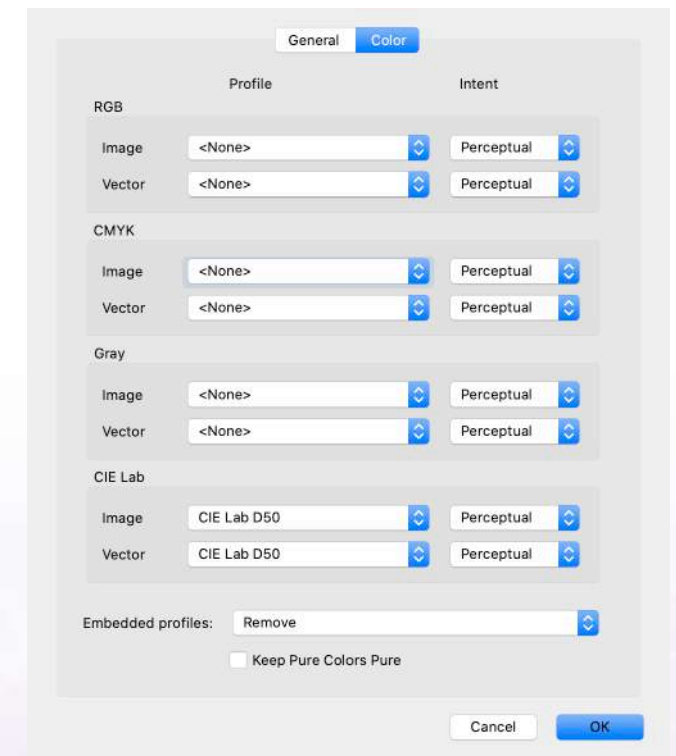
CIE Lab's Image and Vector: CIE Lab D50

Embedded Profiles: Remove

- Finish setting, Click OK, Re-open Layout.



The screenshot shows the 'General' tab of the PrintFactory preferences dialog. It features a 'General' tab and a 'Color' tab. Under 'Available Panels', there are two columns of checkboxes: 'Jobs list', 'Align/nest', 'Mark/bleed', 'Cutting', 'Tile labels', 'White & Special ink', 'Double sided', 'Driver settings', 'Job Dimensions', and 'Textile Step-Repeat'. Below this, the 'Units' are set to 'Millimeter (mm)'. The 'Fixed License Server' and 'Fixed RIP IP list' are both set to '127.0.0.1', with a note '(requires restart)'. The 'Submit behaviour' is set to 'Close'. The 'Reference Profile' is set to 'ISO Coated v2 (ECI)', and there is an unchecked checkbox for 'Use PDF/X Output Intent'. 'Cancel' and 'OK' buttons are at the bottom.



The screenshot shows the 'Color' tab of the PrintFactory preferences dialog. It features a 'General' tab and a 'Color' tab. The 'Color' tab is divided into 'Profile' and 'Intent' sections. Under 'Profile', there are three sections: 'RGB', 'CMYK', and 'Gray'. Each section has 'Image' and 'Vector' dropdowns set to '<None>'. Under 'Intent', there are three sections: 'RGB', 'CMYK', and 'CIE Lab'. Each section has 'Image' and 'Vector' dropdowns set to 'Perceptual'. The 'CIE Lab' section also has 'Image' and 'Vector' dropdowns set to 'CIE Lab D50'. At the bottom, there is an 'Embedded profiles:' dropdown set to 'Remove' and an unchecked checkbox for 'Keep Pure Colors Pure'. 'Cancel' and 'OK' buttons are at the bottom.

Images Layout and Output



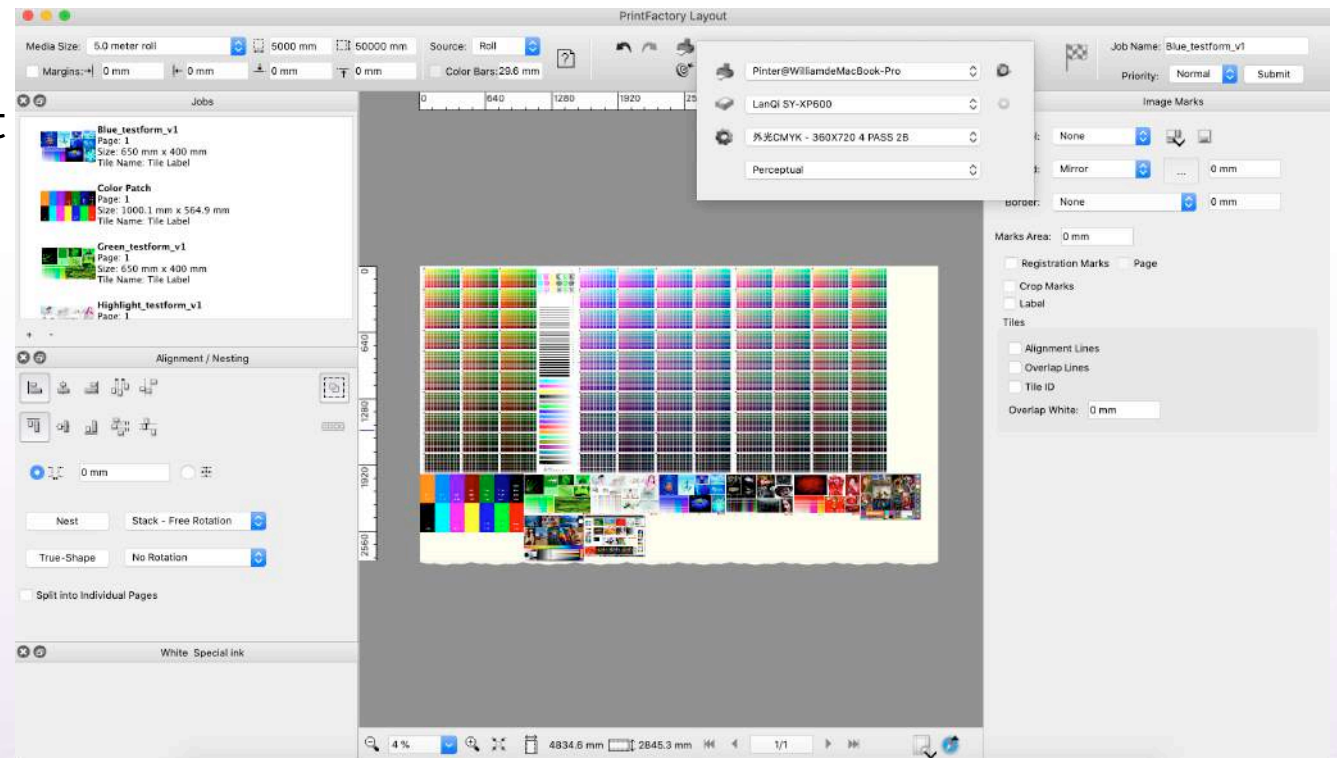
Images Layout

- In Layout Interface, add images, they will be automatically loaded into layout and job list, and automatically nesting
- Select printer, media type, profile in the printer icon above the layout canvas
- Set the actual size of the media on the printer in the upper left corner of Layout

Tips:

If Layout is keeping in the search printer,

Please check profiles are imported successfully and sync is completed



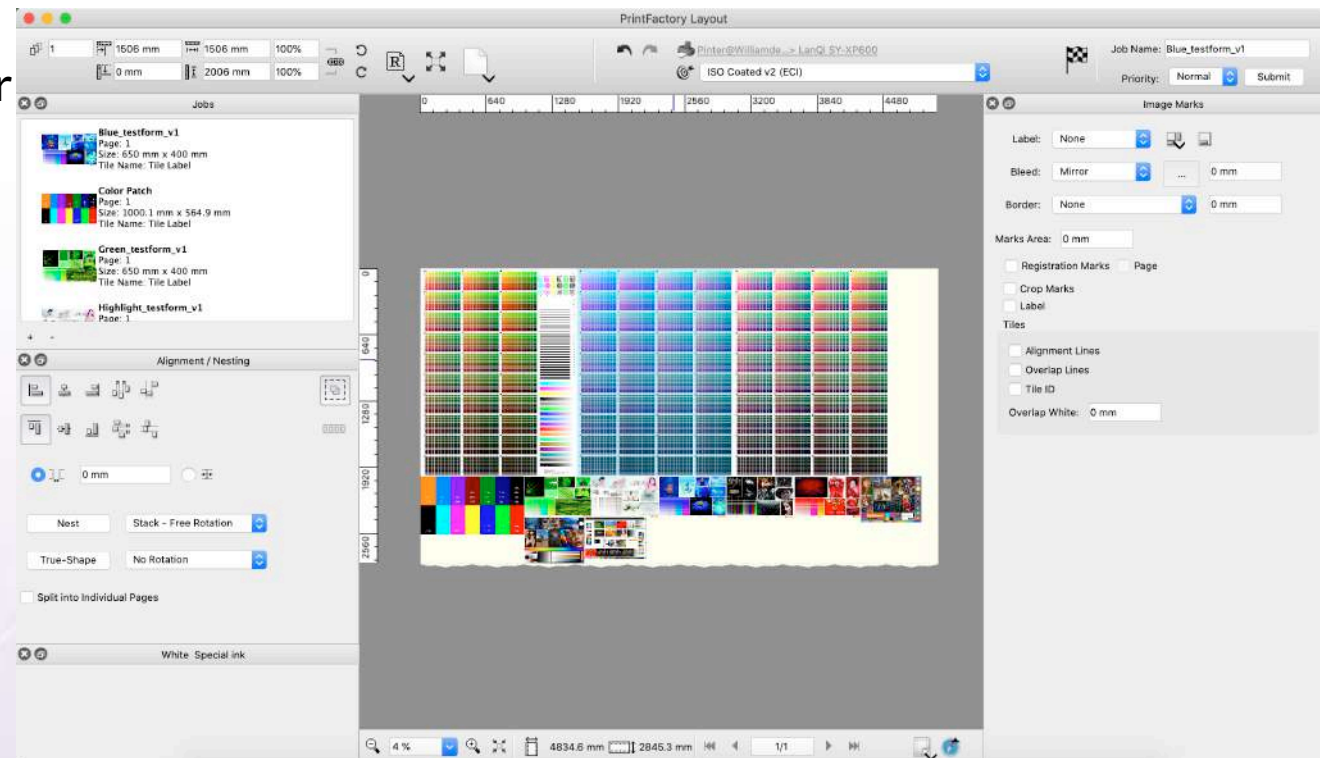
Images Output

- Click image, set the image's size, copies, orientation and other parameters in the upper left corner of the Layout interface.
- Choose image labels type and orientation in Image Marks column.
- Then, use Alignment/Nesting column to layout images.
- Finish, click Submit in the upper right corner of the Layout interface, and output printing.

More user manual:

Please see: <https://help.printfactory.cloud/>

Please call PrintFactory Software Support



Deactivate License



Online Deactivate License

- When you need to replace the computer or system, please online deactivate.
- Right-click Software manager icon, in the lower right corner of Windows system or the upper right corner of Mac system.
- Click Deactivate License, follow Deactivate Wizard to deactivate license.
Note: If Deactivate Wizard appear QR code, it means PrintFactory fail to connect to Internet, please check the front two steps.
- Successfully deactivate license, Deactivate Wizard show:
The License was successfully deactivated!

